



ACHIEVE HOMES

REAL HOMES FOR REAL PEOPLE.

# Nablus - 24



4



2



2

4 BEDROOM  
SINGLE STOREY

## DESIGN DIMENSIONS

LIVING: 165.57 m<sup>2</sup>

GARAGE: 37.4 m<sup>2</sup>

ALFRESCO: 15.4 m<sup>2</sup>

PORCH: 7.7 m<sup>2</sup>

TOTAL: 226.07 m<sup>2</sup> - 24.33 SQ

WIDTH: 14.07 m LENGTH: 20.37 m

## MINIMUM LAND SIZE

ACT:

WIDTH: 15.8m LENGTH: 27.4m

NSW:

WIDTH: 16m LENGTH: 30m

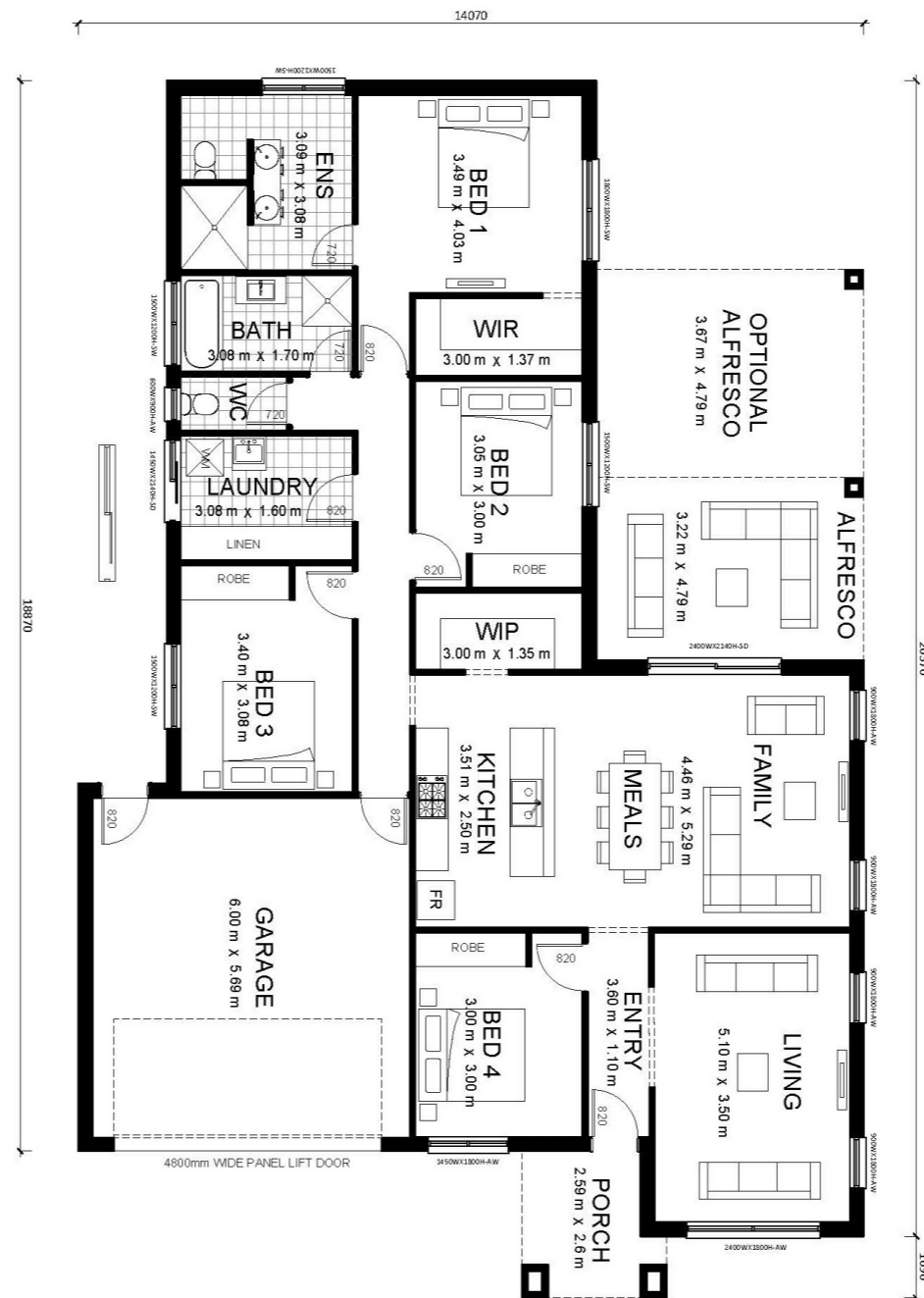
VIC:

WIDTH: 15m LENGTH: 28m

VIEW THIS  
DESIGN ONLINE



SCAN ME



Disclaimer: Design dimensions on this marketing plan are for marketing purposes. Dimensions are indicative, approximate and subject to change once confirmed by Achieve Homes Design team.