



ACHIEVE HOMES

REAL HOMES FOR REAL PEOPLE.

Manchester - 32



4



2



2

**4 BEDROOM
SINGLE STOREY
ACREAGE**

**DESIGN
DIMENSIONS**

LIVING: 237 m²

GARAGE: 36 m²

ALFRESCO: 13.2 m²

PORCH: N/A m²

TOTAL: 301.7 m² - 32.48 SQ

WIDTH: 21.24 m LENGTH: 14.05 m

**MINIMUM
LAND SIZE**

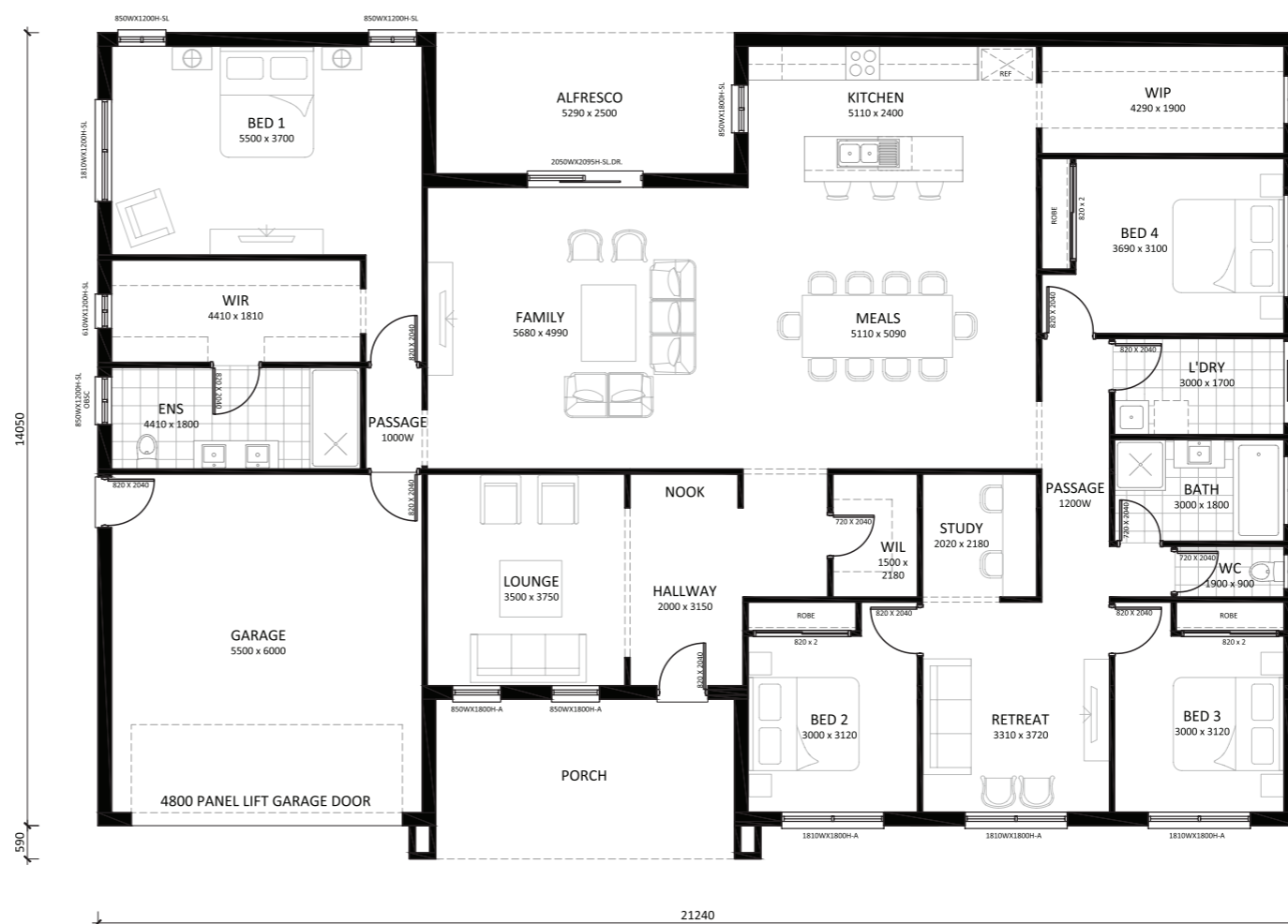
ACT - NSW - VIC

**PLEASE ENQUIRE WITH OUR
HOME CONSULTANTS**

**VIEW THIS
DESIGN ONLINE**



SCAN ME



Disclaimer: Design dimensions on this marketing plan are for marketing purposes. Dimensions are indicative, approximate and subject to change once confirmed by Achieve Homes Design team.