



**\$1,141,900**

**HOUSE+LAND**

**ACHIEVE HOMES**

REAL HOMES FOR REAL PEOPLE.

**Lot 515 Sherwood Grange, Sunbury- Valencia 50**



**Block Size**  
931m<sup>2</sup>

**DESIGN Dimensions**

Living: 401.7m<sup>2</sup>

Garage: 37.4m<sup>2</sup>

Alferesco: 20m<sup>2</sup>

Porch: 5.6m<sup>2</sup>

**TOTAL HOME: 464.7 (m<sup>2</sup>)**

**50.02 SQM**

House Width: 13.4m

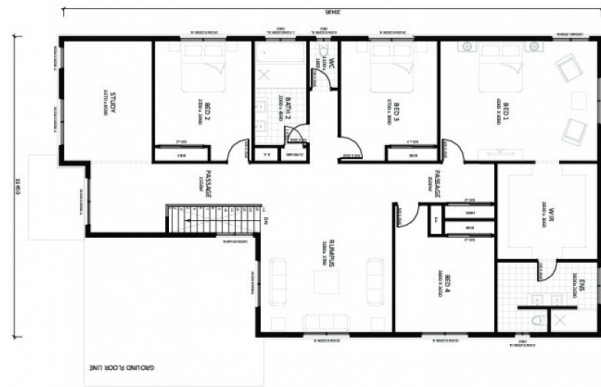
House Length: 20.8m

**Key Features:**

- ✔ 4 Living Areas
- ✔ Hybrid Timber Flooring
- ✔ Porcelain Tiles to Wet areas
- ✔ Estate Guidelines
- ✔ Reverse Cycle Air conditioning
- ✔ 2.7m High Ceilings To Ground Floor
- ✔ Fixed Site Costs
- ✔ 900mm S/S Appliances
- ✔ Exposed Aggregate Driveway



LOWER PLAN



UPPER PLAN

**VIEW HOUSE & LAND PACKAGES ONLINE**



Zaid Jubran  
Mobile: 0427 050 415

**Valencia 50**

**ENQUIRE NOW** 1300 234 432 | [sales.vic@achievehomes.com.au](mailto:sales.vic@achievehomes.com.au) | [achievehomes.com.au](http://achievehomes.com.au)

Achieve Homes reserves the right to alter any price without notice. Subject to developer design approval. Conditions apply. These images are for illustrative purposes only and may depict upgrade options available from Achieve Homes at additional charges such as lighting, window furnishings, landscaping, driveway, paving and timber windows. The price also excludes features not supplied by Achieve Homes such as gardens, fencing and decking. Any alterations and upgrades may incur additional costs. The price does not include stamp duty, legal fees or other costs incurred with the purchase of the land. Please consult a Achieve Homes sales representative for further information and detailed pricing. All designs are the property of Achieve Homes and must not be used, reproduced, copied or varied, wholly or in part without written permission from an authorised Achieve Homes representative. Copyright. Achieve Property Group Pty Ltd.

ACT.ACT.BL No 2009645/NSW.BL No 224797C/ VIC.ABN 41 608 214 375VIC.BL No CDB-U 61982